



WORKING TOGETHER TO CREATE OUR REGION'S FUTURE

# Driven Accountabilities

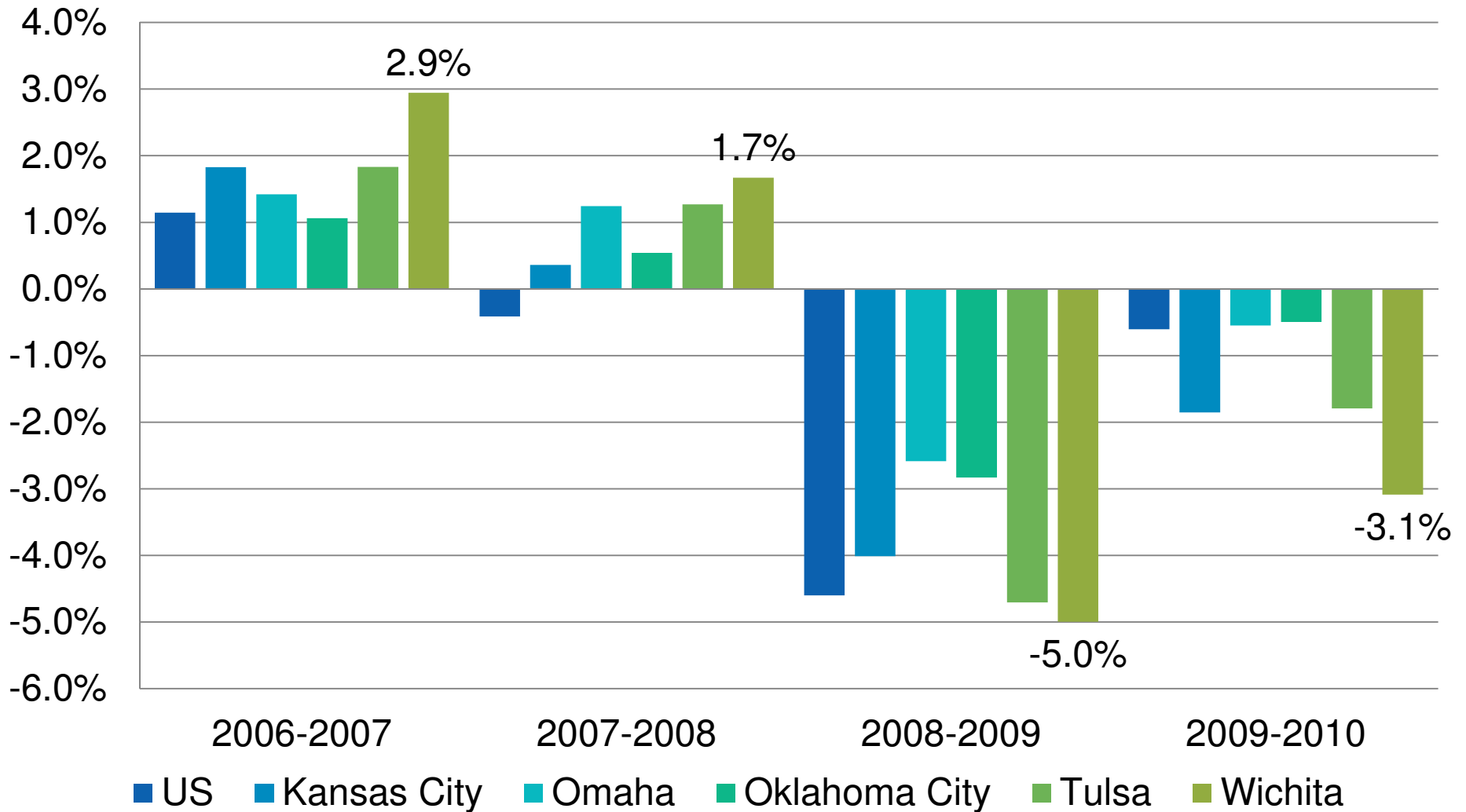
Key Benchmarks measure our progress; we will celebrate our success or change our course and review, revise and refocus as needed.

Jeremy Hill, Director  
Center for Economic Development and Business Research



# Job Growth

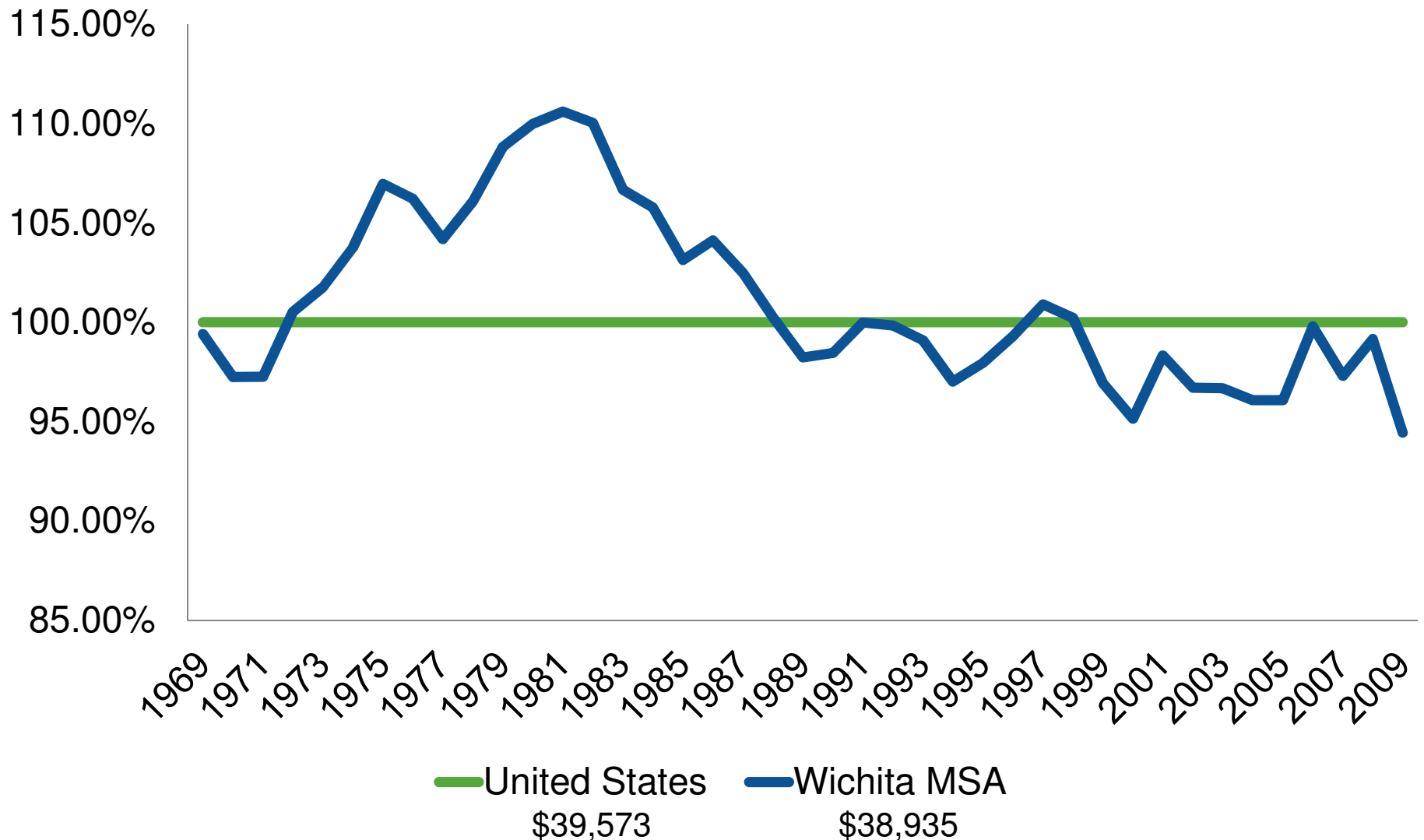
By 2008, exceed the highest of the annual percentage job growth rate of the U.S., Omaha, Tulsa, Kansas City and Oklahoma City.



Source: Bureau of Labor Statistics, Quarterly Census of Employment and Wages

# Per Capita Personal Income

Stop the 21-year decline of Wichita MSA per capita income as a percentage of U.S. per capita income before 2011.



Source: Bureau of Economic Analysis



# Education

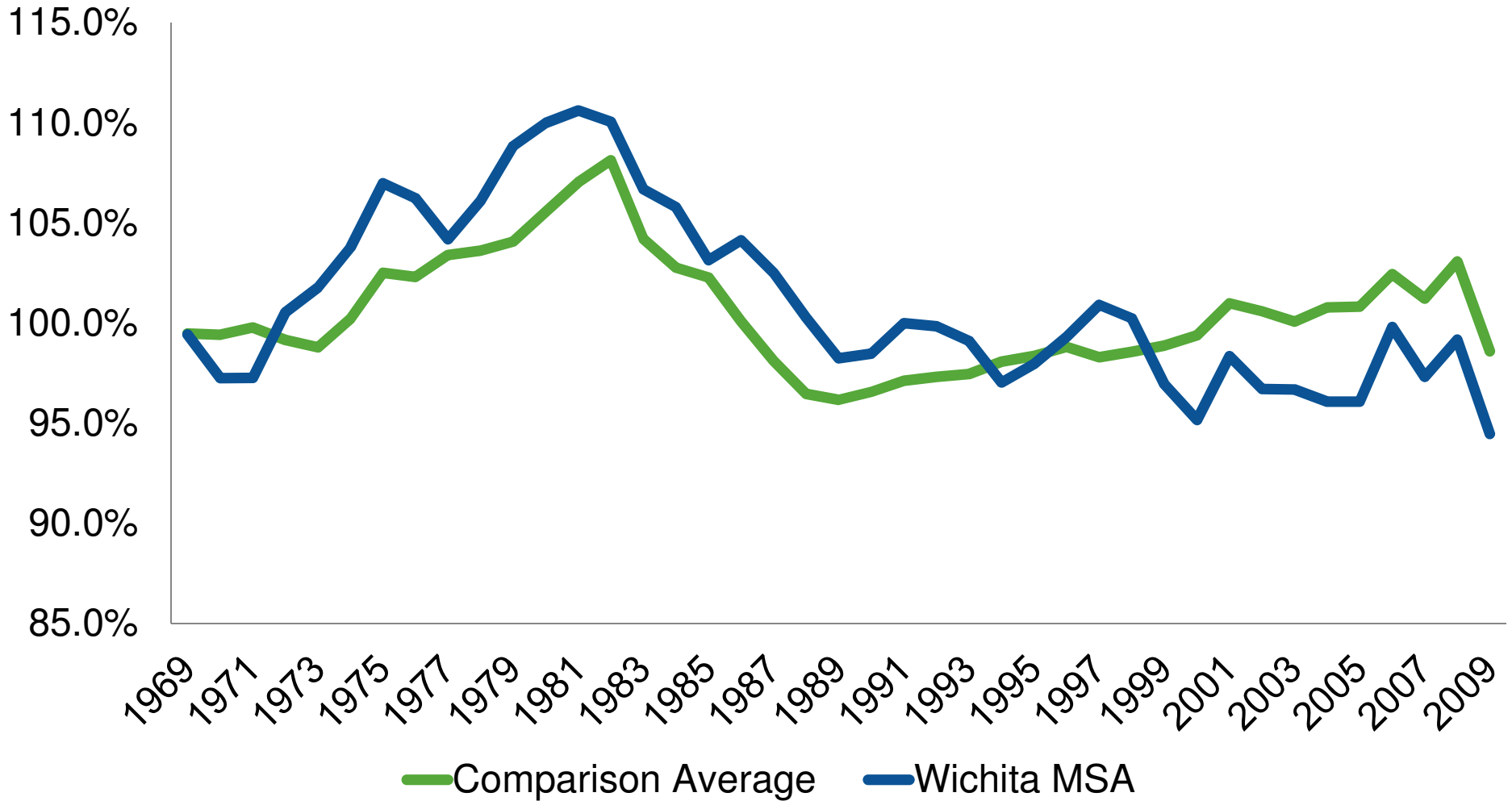
- Skills Training & Life-long Education
- Post-secondary Education - FTE Fall 2010
  - Wichita State – -0.23%
  - Butler - 6.22%
  - Cowley – 13.74%
- Pre- Kindergarten through 12<sup>th</sup> grade, Adequate Yearly Progress (AYP)
  - 2004-2005 87%
  - 2008-2009 86%

Source: Kansas Board of Regents, Kansas Department of Education



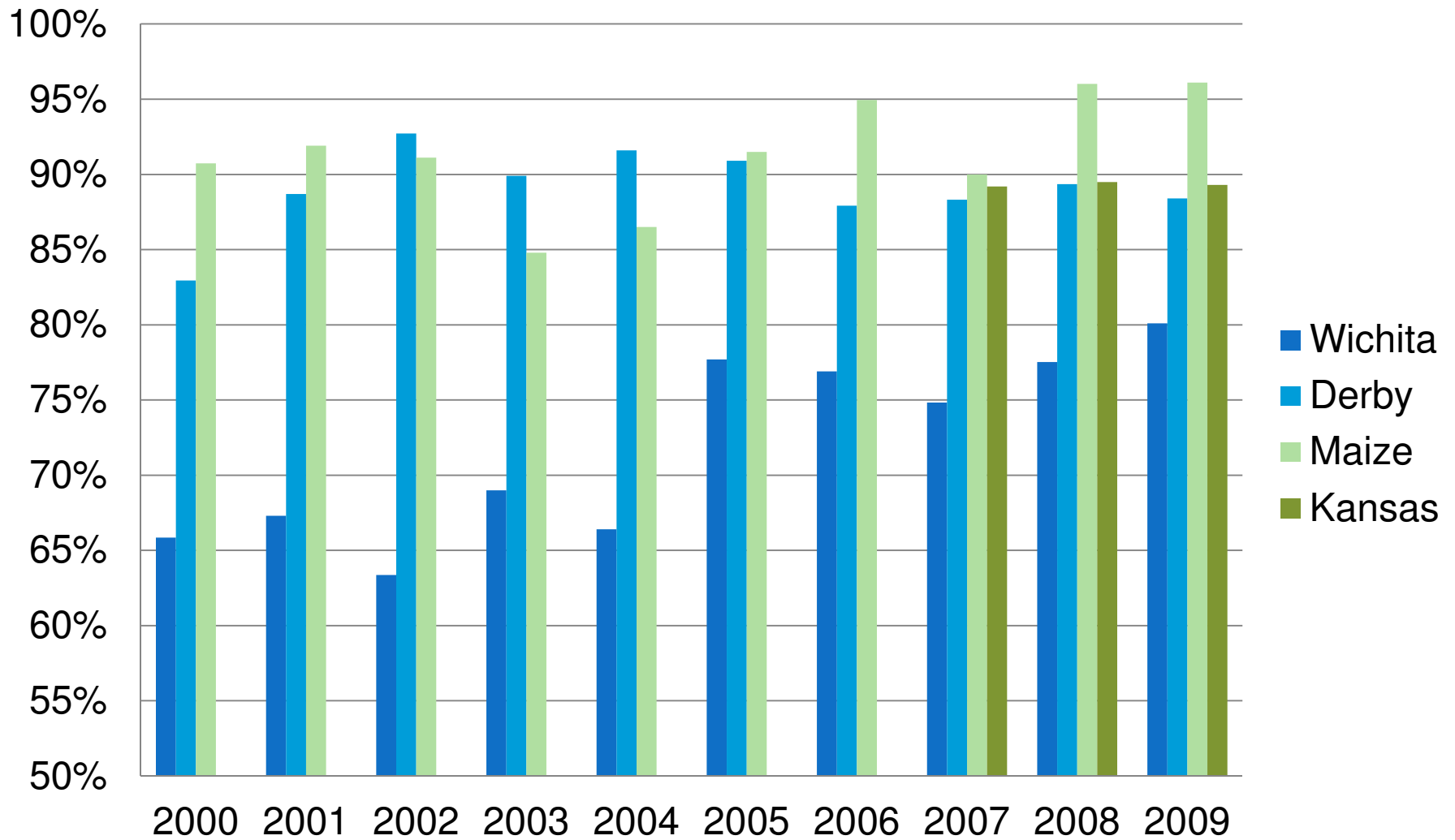
# Per Capita Personal Income

By 2024 exceed the annual average per capita income of Omaha, Tulsa, Kansas City and Oklahoma City metropolitan areas.



Source: Bureau of Economic Analysis

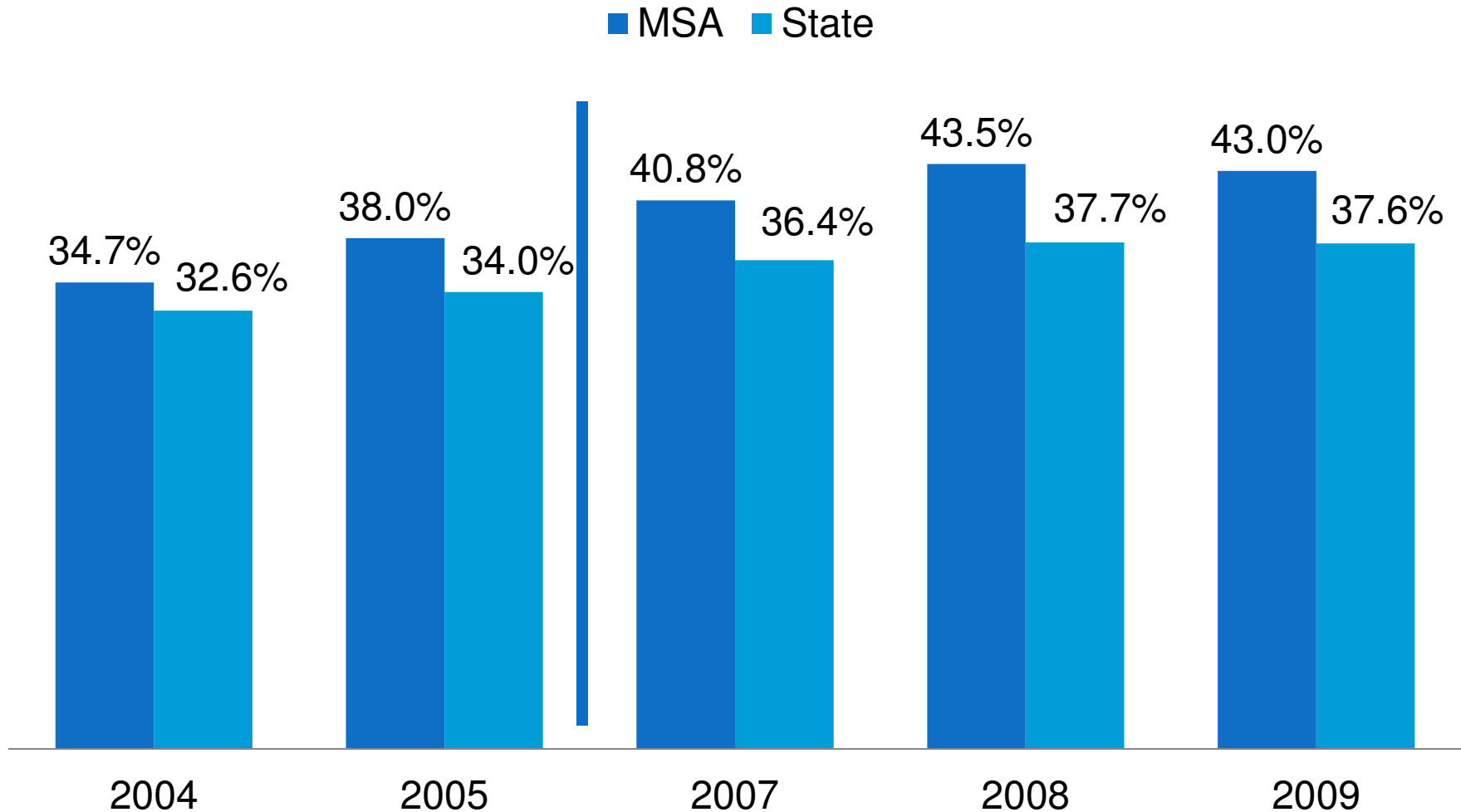
# Education – Graduation Rate



Source: Kansas Department of Education

# Family Stability – Out-of-Wedlock Births

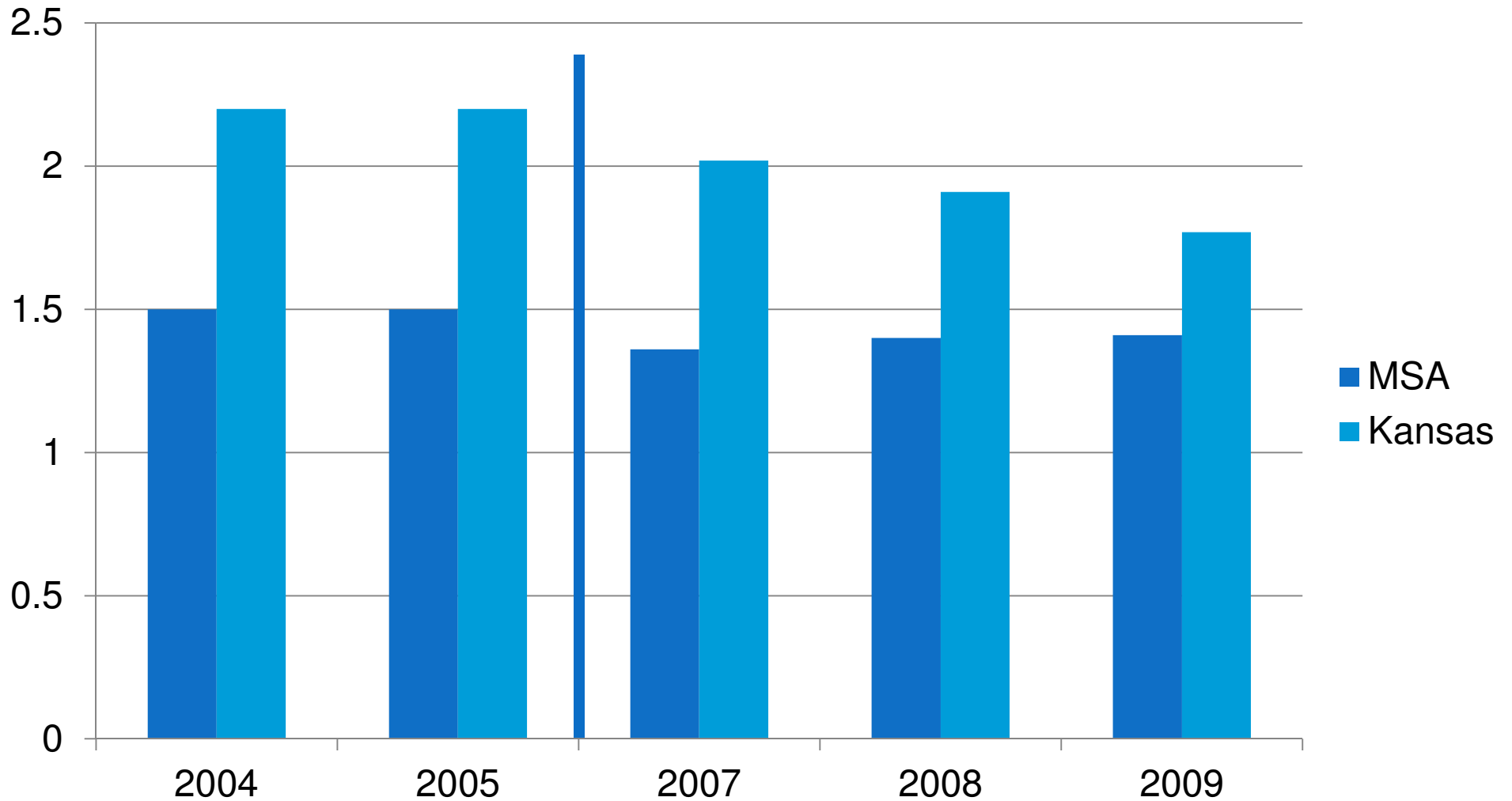
The Wichita MSA will be below the Kansas average by 2024 in percentage of live births born out of wedlock.



Source: Kansas Department of Health and Environment

# Family Stability- Marriage

The four counties in the Wichita MSA will have a better ratio of marriages to marriage dissolutions (annulments & divorces) than Kansas by 2024.



Source: Kansas Department of Health and Environment



WORKING TOGETHER TO CREATE OUR REGION'S FUTURE

# Arts & Recreation Benchmark

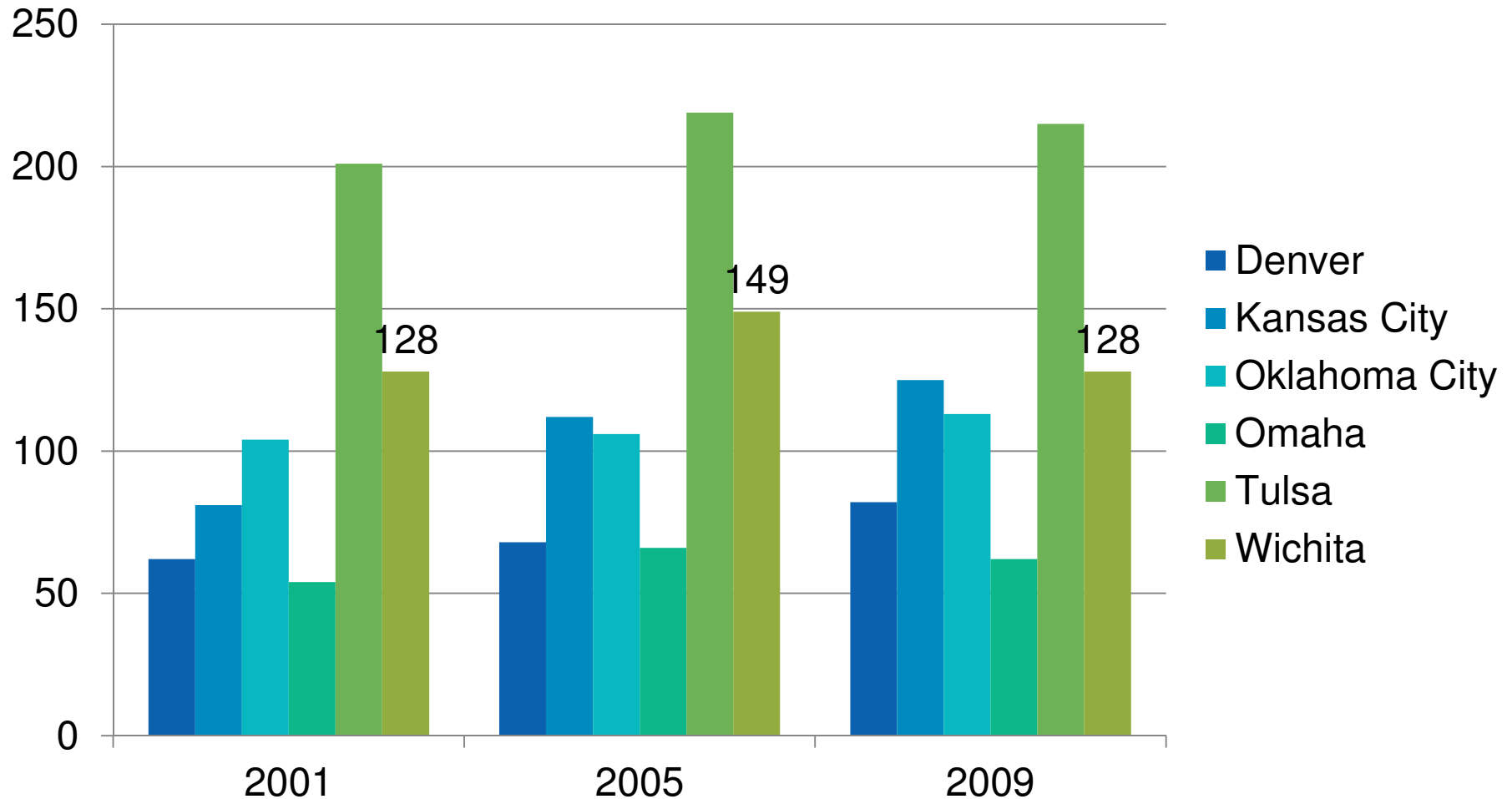
By 2014: Wichita MSA will place in the top one-fourth of cities ranked



# Employment Rank

Percentage of Population Employed in Leisure and Hospitality

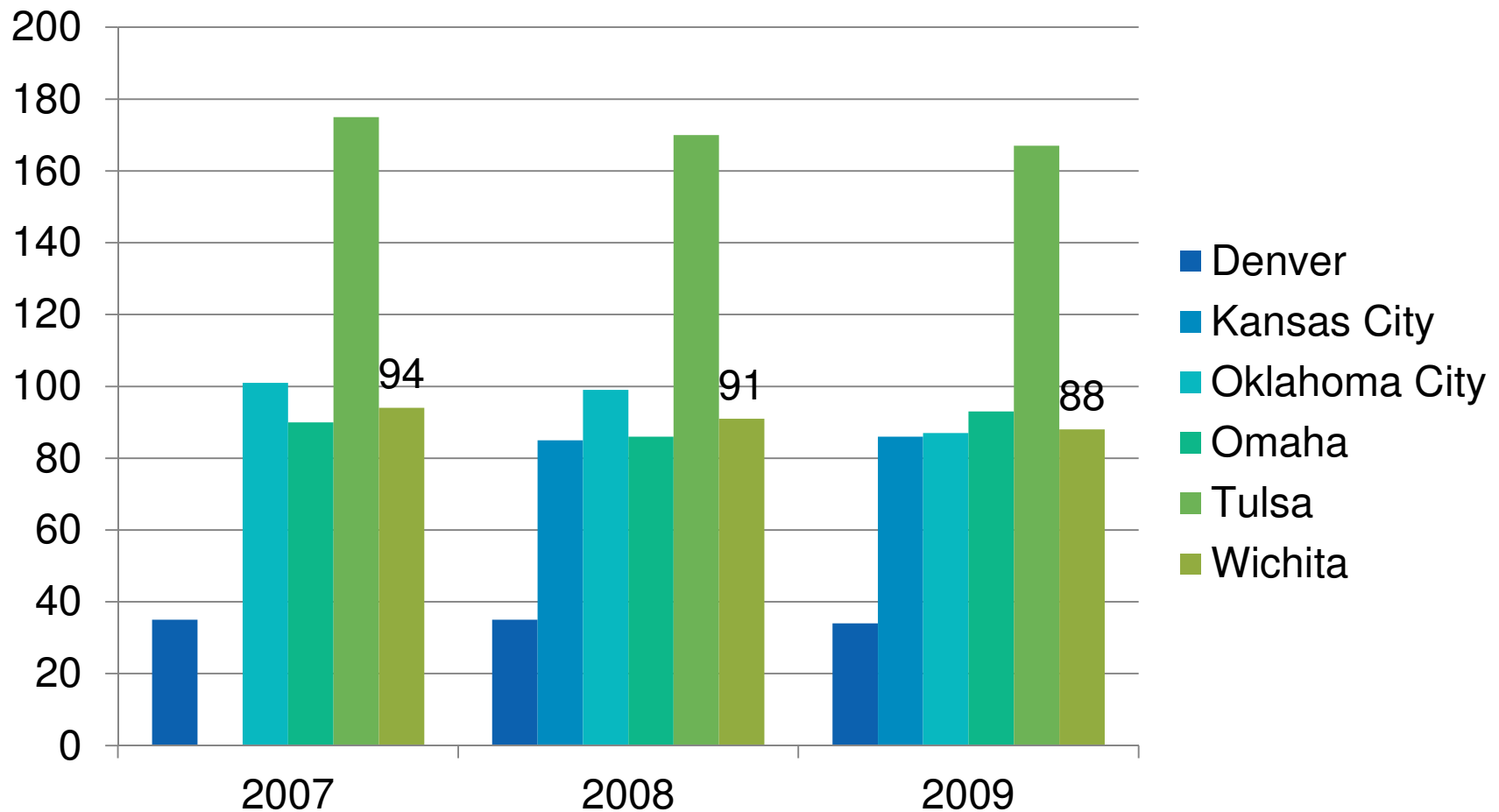
By 2014: Wichita MSA will place in the top one-fourth (<90) of cities ranked.



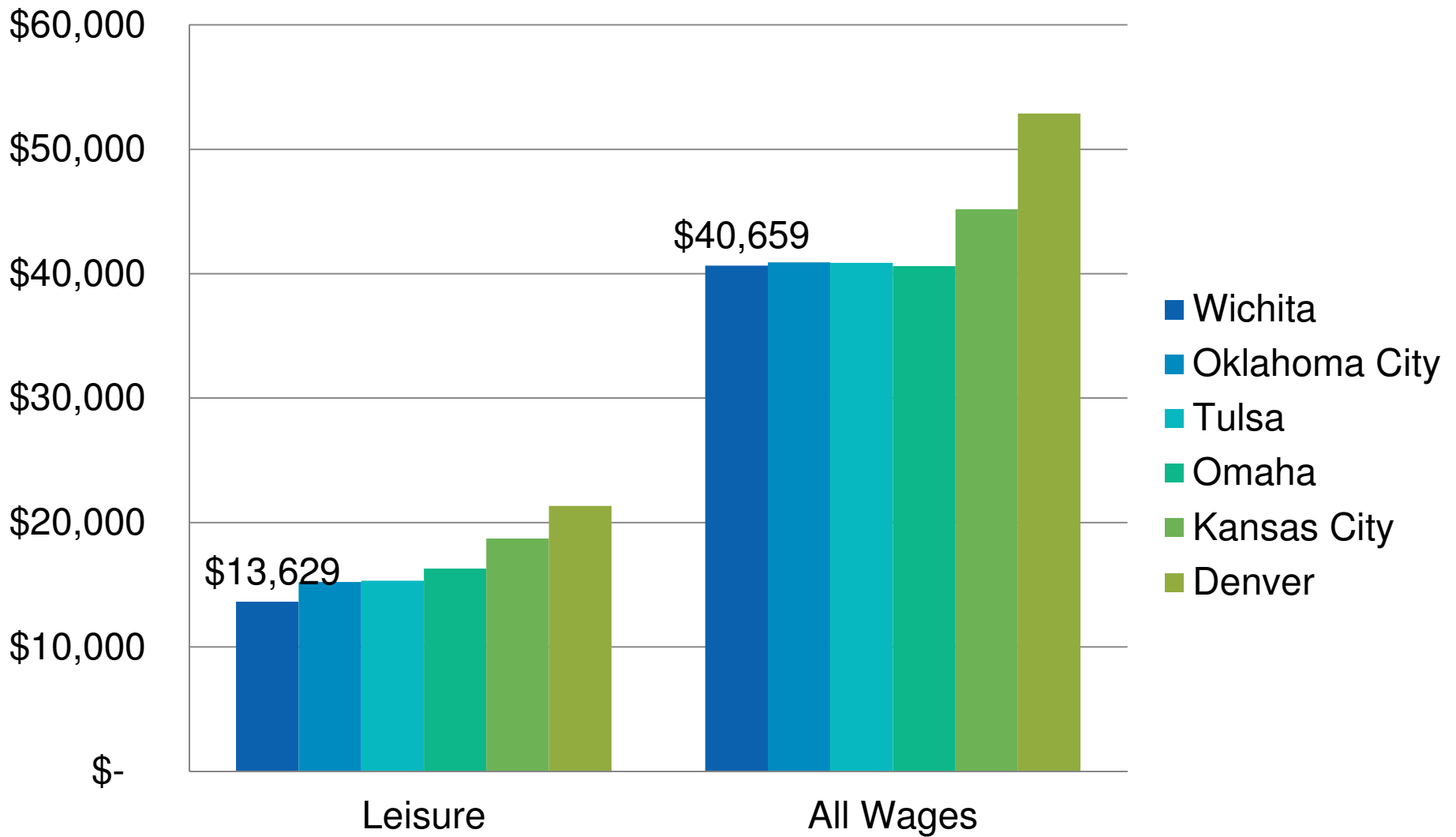
# Per Capita GDP Rank

## Leisure and Hospitality

By 2014: Wichita MSA will place in the top one-fourth (<90) of cities ranked.

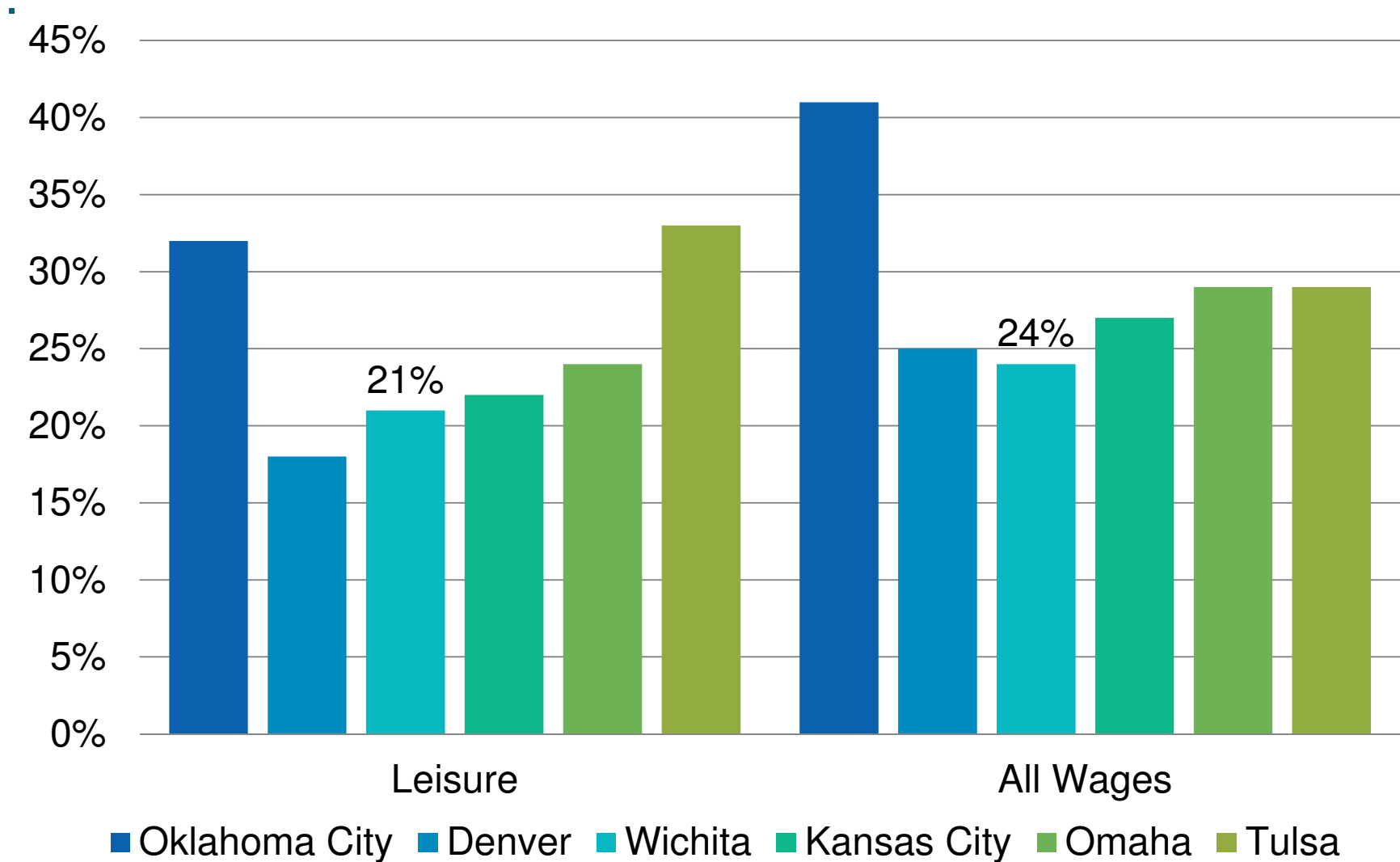


# Average Annual Wage 2010



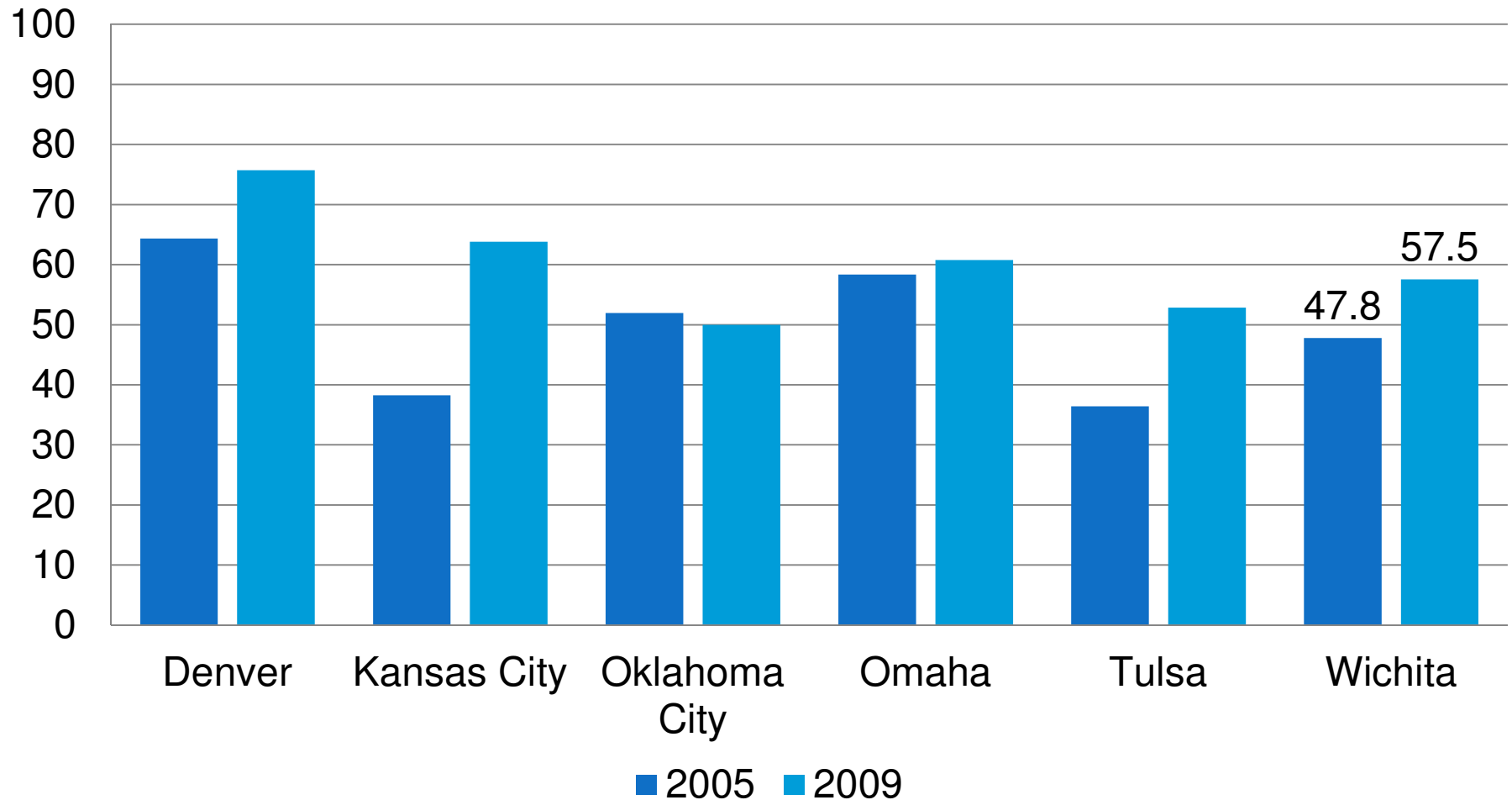
Source: Bureau of Labor Statistics

# Wage Growth (2001 to 2010)



# Arts

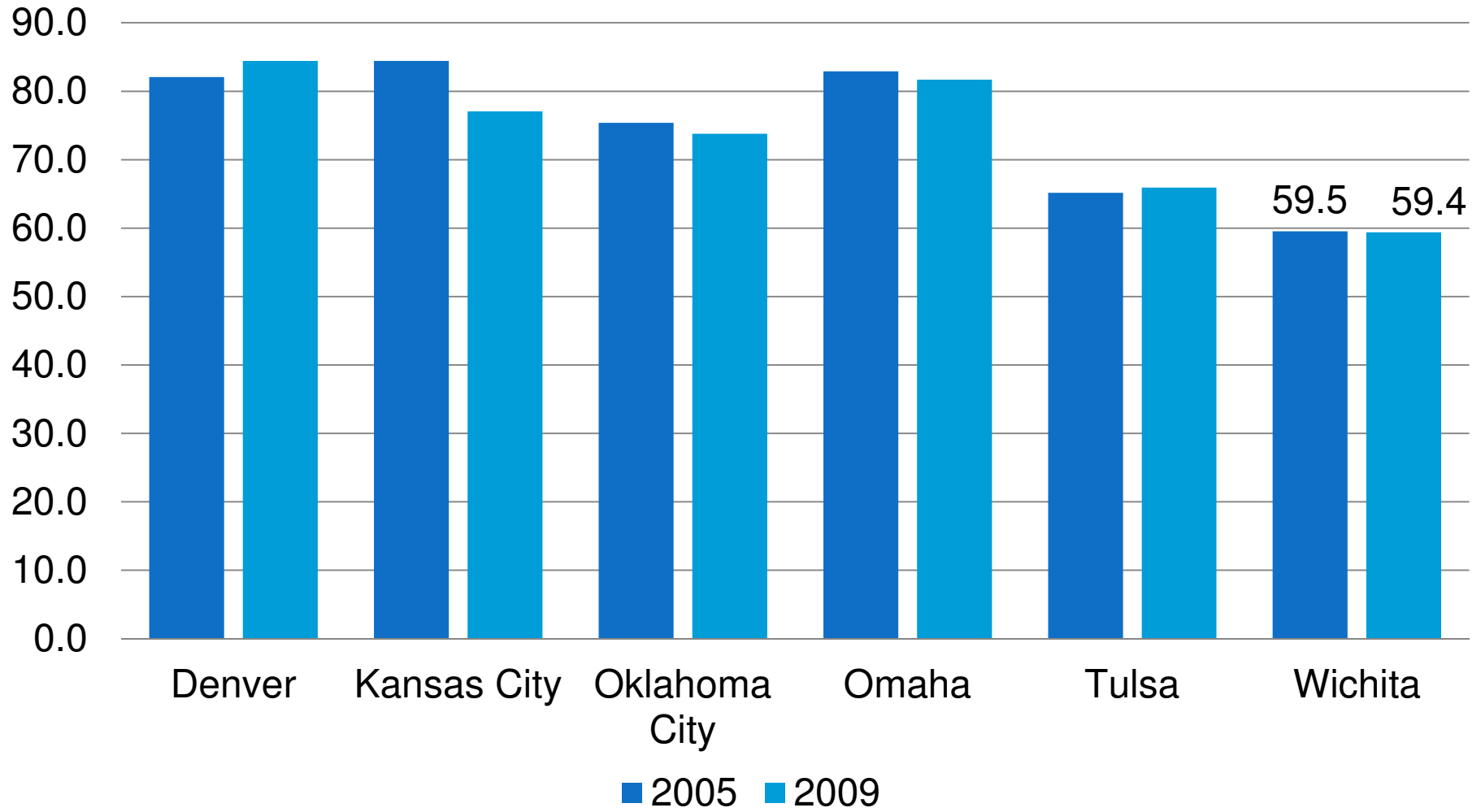
Index of 320 metropolitan areas by the concentration of performing arts companies, writers, artists and performers relative to total employment and total establishments in the area.



Source: Census Bureau, Center for Economic Development and Business Research

# Recreation and Entertainment

Index of 280 metropolitan areas by the availability of spectator sporting venues, recreational sports centers, museums, historical sites, amusement parks and arcades.



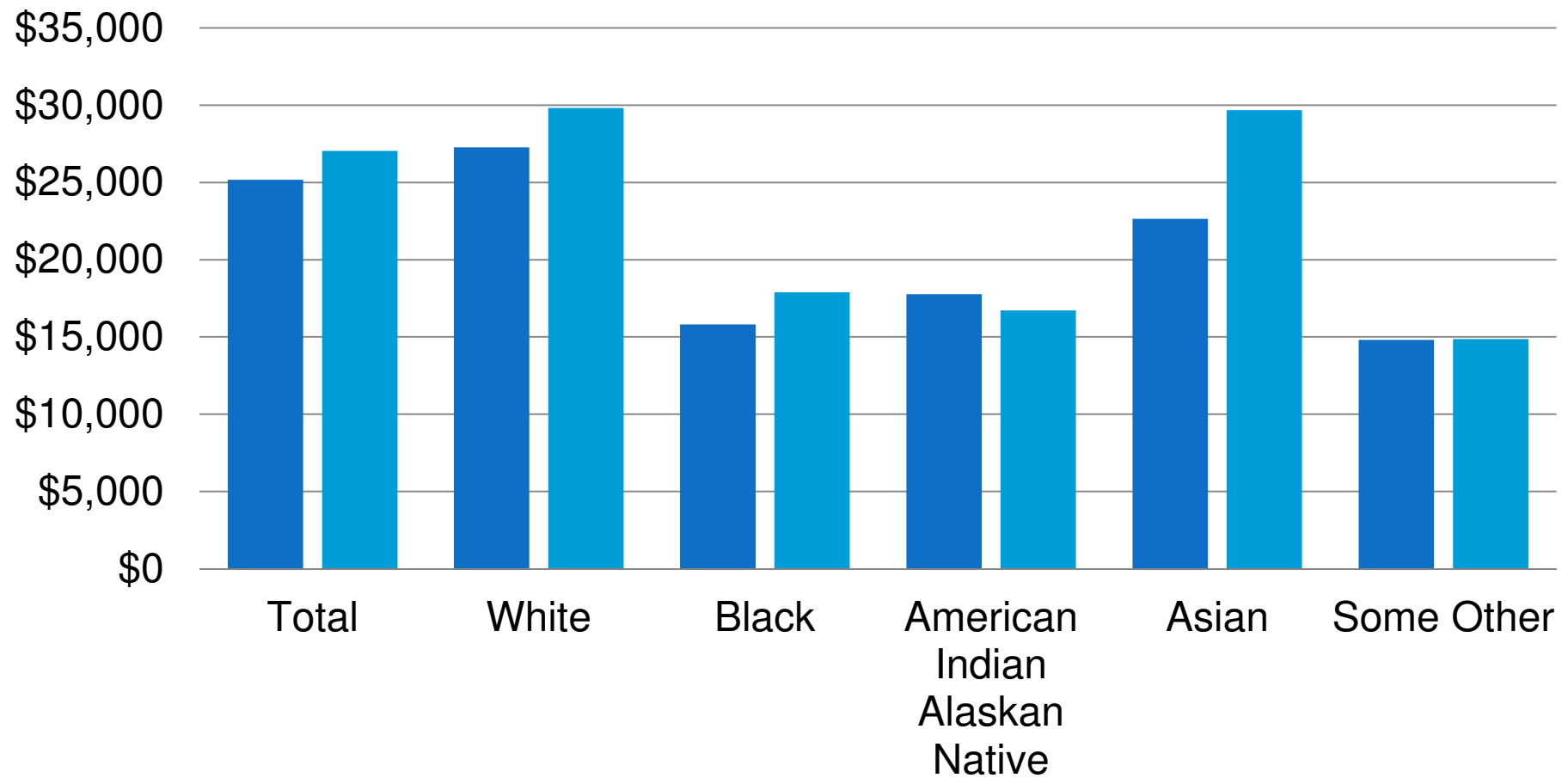
Source: Census Bureau, Center for Economic Development and Business Research

# Racial Diversity – Per capita Income

Be above the U.S. per capita income for each minority group by 2010 and by 2020 eliminate one-half of each minority per capita income gap.

**2009**

Inflation Adjusted



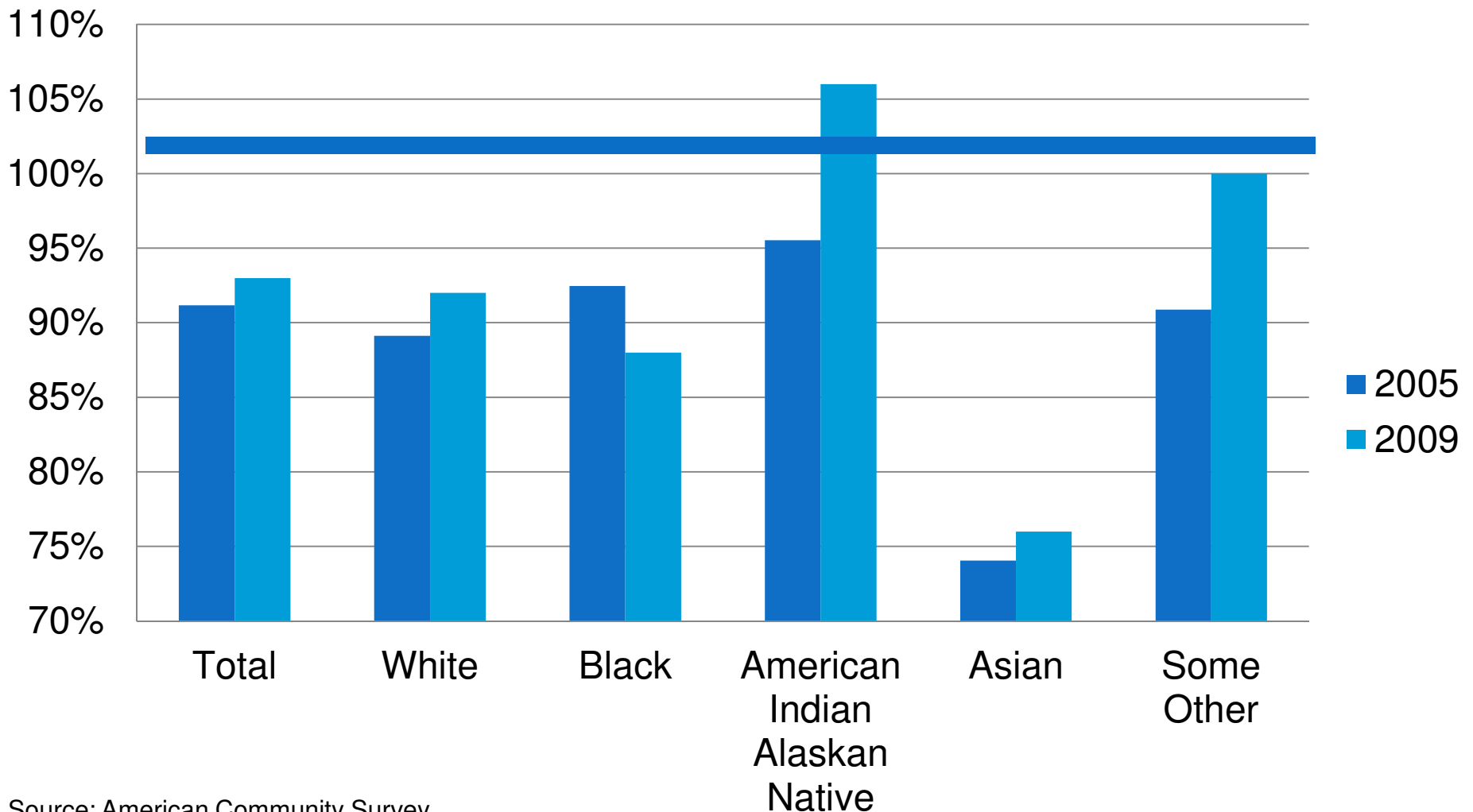
Source: American Community Survey  
2005-2009 Estimate

■ Wichita, MSA ■ National

# Racial Diversity – Per capita Income

Be above the U.S. per capita income for each minority group by 2010 and by 2020 eliminate one-half of each minority per capita income gap..

Gap



Source: American Community Survey



WORKING TOGETHER TO CREATE OUR REGION'S FUTURE

# Driven Accountabilities

Key Benchmarks measure our progress; we will celebrate our success or change our course and review, revise and refocus as needed.

Jeremy Hill, Director  
Center for Economic Development and Business Research





# Racial Diversity, Opportunity & Harmony

In all of the six foundations and strategies of Visioneering Wichita, we will be committed to racial diversity, opportunity and harmony for everyone.

- **Attitude Survey**: Conduct a regular scientific attitude survey to measure changes in perceptions about racial diversity, opportunity and harmony. The survey will establish indices that measure diversity, opportunity and harmony in social interaction, jobs, education, healthcare and leadership (initial survey completed January 2006, expected annual increments of improvement in the indices will be established.)





# Racial Diversity, Opportunity & Harmony

In all of the six foundations and strategies of Visioneering Wichita, we will be committed to racial diversity, opportunity and harmony for everyone.

- **Income Gap**: Be above the U.S. per capita income for each minority group by 2010 and by 2020 eliminate one-half of each minority per capita income gap.



# TOTAL FINANCIAL INVESTMENT for WICHITA DOWNTOWN DEVELOPMENT

(private & public funds)

Source: City of Wichita, Sedgwick County, Wichita  
Downtown Development Corporation

