

Community

HEALTH

Convening — Catalyzing — Collaborating

PRIORITIES



Summer 2010

Agenda

Welcome
Priorities

--Sonja Armbruster
--Roderick Harris
--Anne Nelson
--Gerry Lichti
--Mim McKenzie
--Judy Johnston
--Jon Rosell

Call to Action



VISIONEERING
WICHITA

Creating the future for our regional community.



*Sedwick County...
working for you*

• Sedwick County Health Department •

20
10

Community Health Priorities

Convening — Catalyzing — Collaborating

Take Action WORK TOGETHER



20
10

Community Health Priorities

Purpose: Develop Action Plans

Make no little plans; they have no magic to stir men's blood.

--Daniel H. Burnham
American Architect & City Planner
Director of Works
World's Columbian Exposition, 1893

20
10

Community Health Priorities

Convening — Catalyzing — Collaborating

Process

Forum One

Community Health Assessment, February 26, 2010

Forum Two

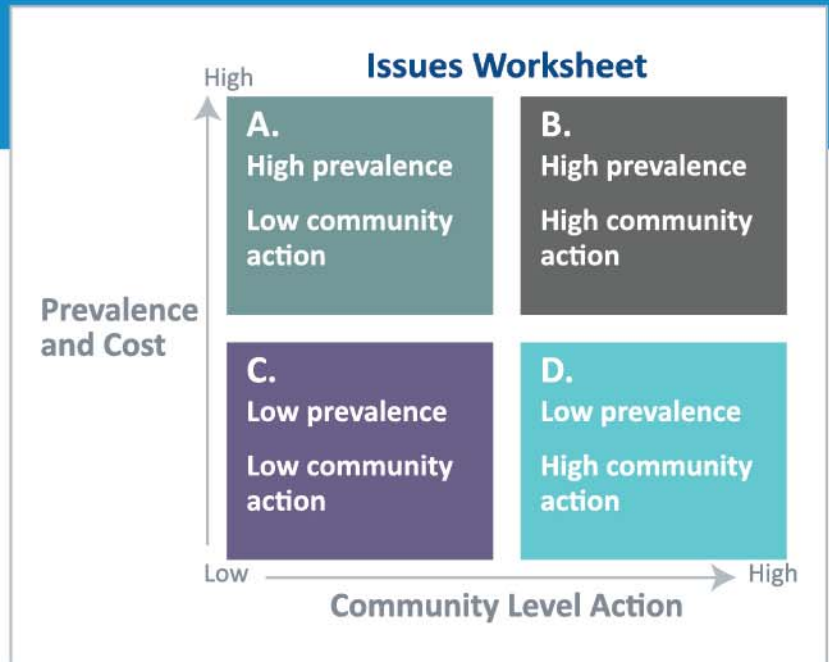
Forces of Change Assessment, March 26, 2010

Forum Three

Strategic Priorities, April 30, 2010

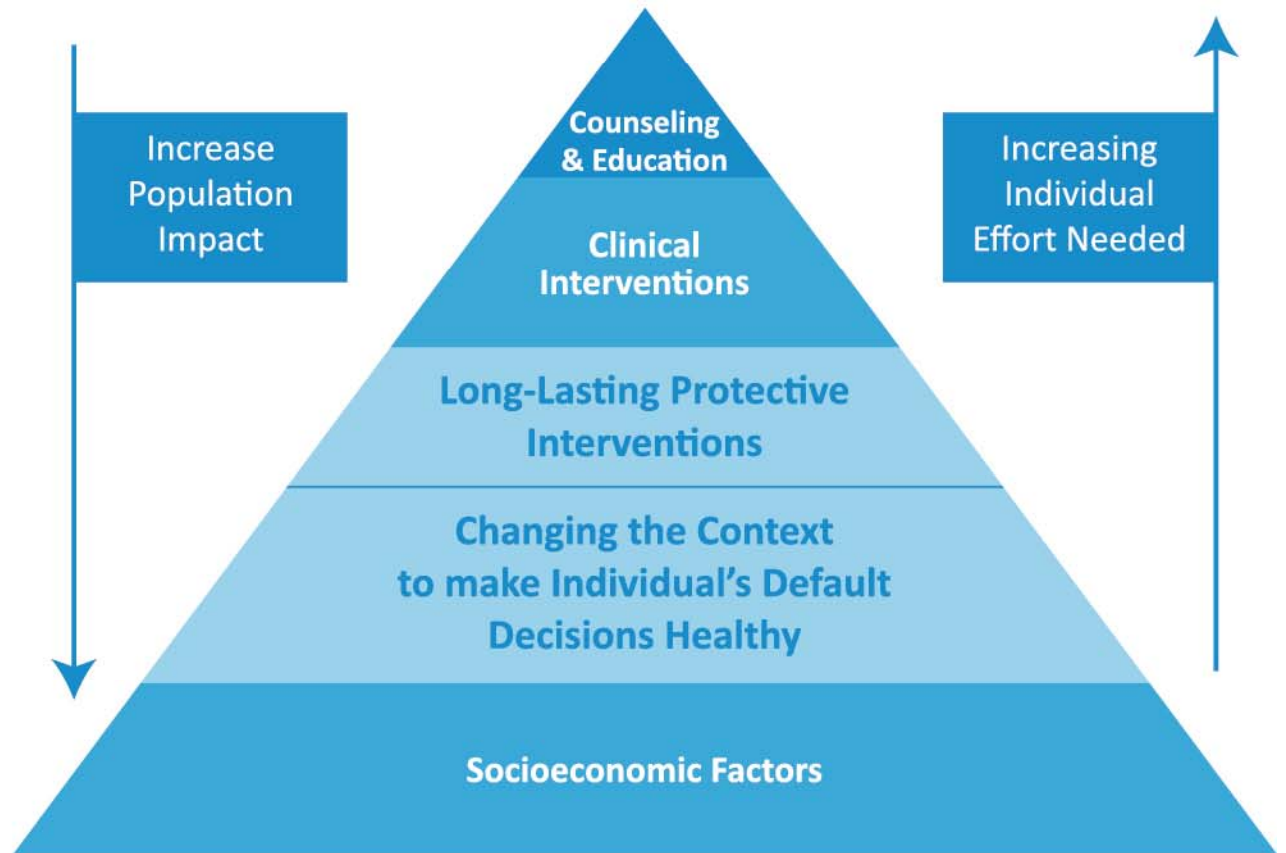
20
10

Community Health Priorities



A Framework for Public Health Action:

The Health Impact Pyramid



20
10

Community Health Priorities

What are the health priorities for Wichita and Sedgwick County?



20
10

Community Health Priorities

Priority Health Issue: Health Disparities

The situation:

- Racial & ethnic minorities
and/or
- Low socio-economic status

= higher rates of disease, disability and premature death than non-minorities or low SES

20
10

Community Health Priorities



Priority Health Issue: Health Disparities

Definition of Health Disparities:

Differences in health conditions, treatments, and health outcomes; primarily, these are differences that are seen as avoidable and unjust.

20
10

Community Health Priorities



Priority Health Issue: Health Disparities

Examples of Health Disparities

- Nationally, almost 12% of Blacks are currently depressed compared to 6% of Whites and 7% of Latinos.
- The majority of Kansans are physically inactive, but Blacks and Hispanics (or Latinos) having higher rates of inactivity than Whites.
- One in four Whites in Kansas is obese; the rate is even higher for Hispanics (30%) & Blacks (40%).



Priority Health Issue: Health Disparities

How can you involved?

- Educate your membership and the public about health disparities
- Share best practices and lessons learned
- Collaborate with other non-public health partners, when possible
- Improve utilization of research and outcome evaluations
- Promote cultural competency in health care delivery
- Embed health disparity messages into health materials and activities

20
10

Community Health Priorities



Priority Health Issue: Access

The situation:

- Economic downturn
- National health care reform
- Increasing demand at community health clinics

	Sedgwick	Omaha	Tulsa	OKC	Denver
Uninsured Adults	11%	10%	19%	20%	19%
Primary Care Providers (rate per 100,000 residents)	146	201	132	133	226



Priority Health Issue: Access

Best Practices - Community Initiatives:

- Coalition of Community Health Clinics
- Community Coverage Initiative
- Wichita Health Information Exchange

VW Community Action:

- Promote, Support, Communicate



Priority Health Issue: Access

Anticipated Outcomes:

- Increased proportion of primary care providers
- Expansion of community health clinics
- Greater percentage of people who have a direct relationship with a health care provider or a “medical home”
- Decreased health insurance costs for individuals and employers



Priority Health Issue: Access

How will you connect?

- Organization?
- Community?

Contact:

- **Roderick Harris**, Center for Health Equity, Sedgwick County Health Department, 316-660-7312 or rlharris@sedgwick.gov
- **Anne Nelson**, Central Plains Regional Health Care Foundation, 316-688-0600 or annenelson@projectaccess.net



Priority Health Issue: Obesity and Diabetes

The situation:

- Lack of physical activity and healthy eating, leading to serious health issues

	Sedgwick	Omaha	Tulsa	OKC	Denver
Adult Obesity	28%	27%	27%	28%	16%
Diabetic Screening	83%	83%	80%	77%	62%
Access to Healthy Foods	51%	49%	41%	37%	44%
Meeting recommended physical activity guidelines	45.7%	51.9%	47.6%	44.8%	55.3%
5 fruits & veggies daily	17.7%	26.0%	18.8%	17.6%	25.8%



Priority Health Issue: Obesity and Diabetes

Best Practices:

- Social networks
- Encouraging physical activity in the community, workplace and school

VW Community Action:

- Engage a broader base of partners
- Highlight best practices, especially in workplace
- Healthy food options that are economical and accessible
- Support policies that improve healthy lifestyles



Priority Health Issue: Obesity and Diabetes

Anticipated Outcomes:

- Reduced obesity rate, increased physical activity and healthy eating
- Common messages in the community that promote healthy eating and physical activity
- Emphasis on change in benefit packages that support wellness activities for employees
- Increased access to local food markets
- Outdoor space accessible for physical activity



Priority Health Issue: Obesity and Diabetes

How will you connect?

- Organization?
- Community?

Contact:

- **Mim McKenzie**, Wichita YMCA, community development executive director at 316- 264-4066 or mim@wichitaymca.org
- **Ron Whiting**, Wichita Business Coalition on Health Care, executive director at 316-268-1154 or ron@wbchc.com
- **Becky Tuttle**, Sedgwick County Health Department, health promotion coordinator at 316-660-7251 or btuttle@sedgwick.gov
- Go to www.goplaykansas.org, get out and go play!



Priority Health Issue: Mental Health

The situation:

- Mental disorders affect one in four adults
- Impact on individual, family, community
- Significance of alcohol and other substance abuse

	Sedgwick	Omaha	Tulsa	OKC	Denver
Binge Drinking	13%	19%	14%	15%	21%
Poor Mental Health Days	3.1	2.7	3.6	3.8	3.3



Priority Health Issue: Mental Health

Best Practices:

- Educate the public about the signs of mental illness
- Reduce stigma associated with mental illness

VW Community Action:

- Organize meetings to identify, coordinate and promote mental health literacy
- Identify opportunities to promote efforts that will reduce stigma



Priority Health Issue: Mental Health

Anticipated Outcomes:

- Coordinated promotion of public education opportunities
- Increased participation in public education opportunities
- Increased number of referrals for mental health services
- Improved community mental health indicators



Priority Health Issue: Mental Health

How will you connect?

- Organization?
- Community?

Contact:

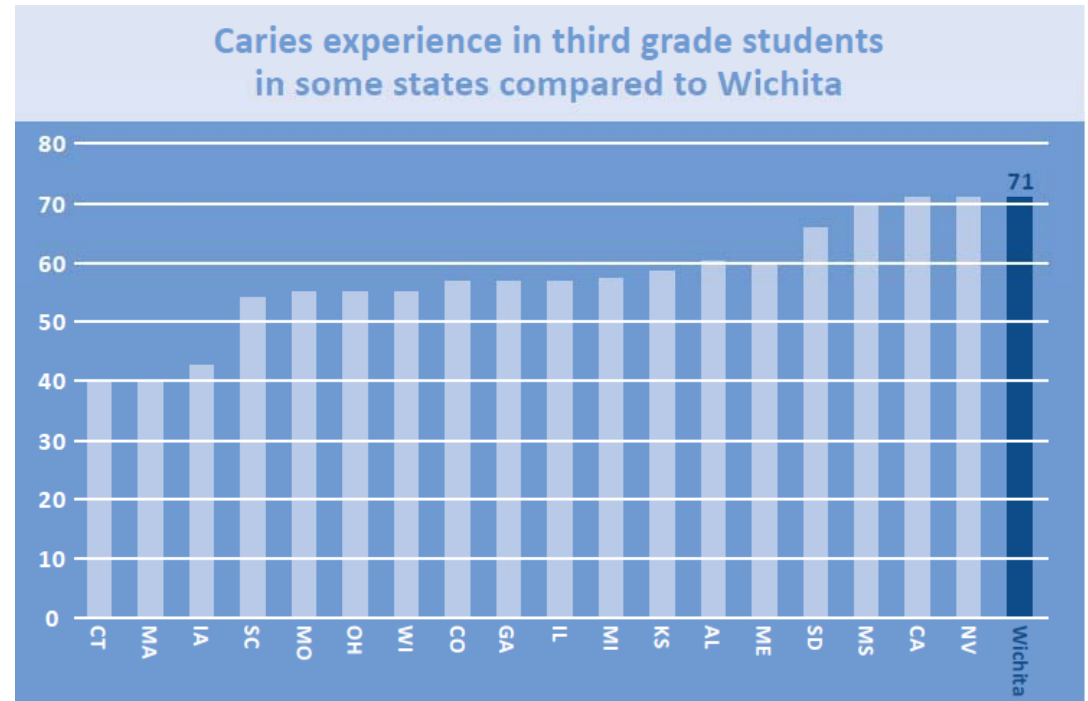
- **Jason Scheck**, director, COMCARE Crisis Intervention Centers, at jscheck@sedgwick.gov
- **Gerry Lichti**, National Alliance on Mental Illness – Wichita at 316-685-9157



Priority Health Issue: Oral Health

The situation:

- Oral health is connected to overall health
- Tooth decay, cavities are leading cause of childhood illnesses



Priority Health Issue: Oral Health

Best Practices:

- Coalition engages community
- Public health approach

VW Community Action:

- Assisting in identifying and recruiting community advocates
- Leveraging financial resources
- Communicating key messages



Priority Health Issue: Oral Health

Anticipated Outcomes:

- Improved oral health conditions among people in Wichita/Sedgwick County, including decreased incidents of tooth decay, dental caries and emergency oral health incidents
- Reduced oral health costs
- Prevention of oral health problems and associated health conditions



Priority Health Issue: Oral Health

How will you connect?

- Organization?
- Community?

Contact:

- **Amber Sellers**, co-chair of Wichita/Sedgwick County Oral Health Coalition at 316-682-1853 or asellers@childstart.org
- **Kim Walker**, co-chair of Wichita/Sedgwick County Oral Health Coalition at 316-660-7346 or kwalker@sedgwick.gov



Next Steps

- Looking for opportunities to share the plan
- Collecting the worksheets
 - Sending back out
 - Check in at 6 months
- Monitoring health outcomes measures
- Working with all for additional process measures

20
10

Community Health Priorities





Call to Action!

20
10

Community Health Priorities

Convening — Catalyzing — Collaborating
