

# W A M P O

Wichita Area Metropolitan Planning Organization

William Christian  
Principal Planner

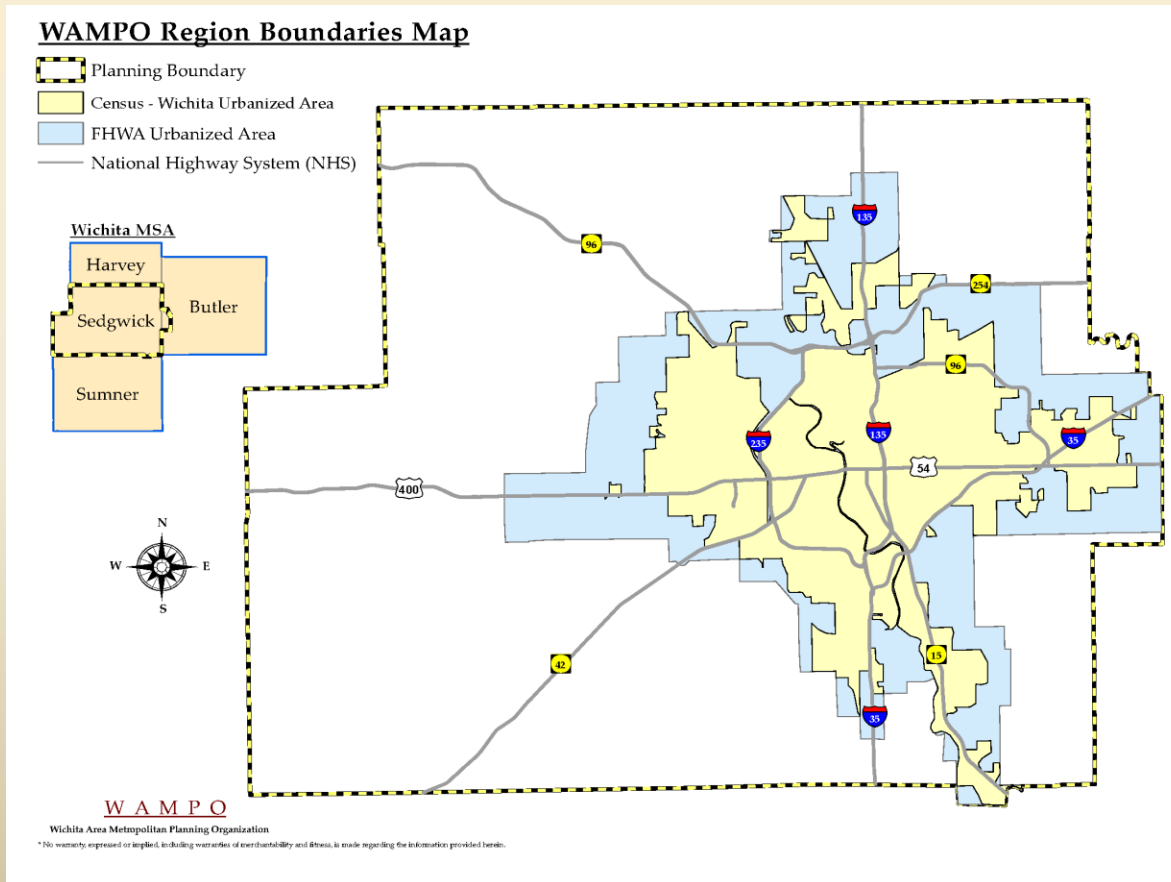
Visioneering Wichita  
Environmental Sustainability Alliance

Wichita Transit Administrative Office  
March 24, 2011

# W A M P O

## Wichita Area Metropolitan Planning Organization

- Designated Metropolitan Planning Organization (MPO) for the Region (21 Cities and 3 Counties)



# W A M P O

## Wichita Area Metropolitan Planning Organization

- Planning partners include:

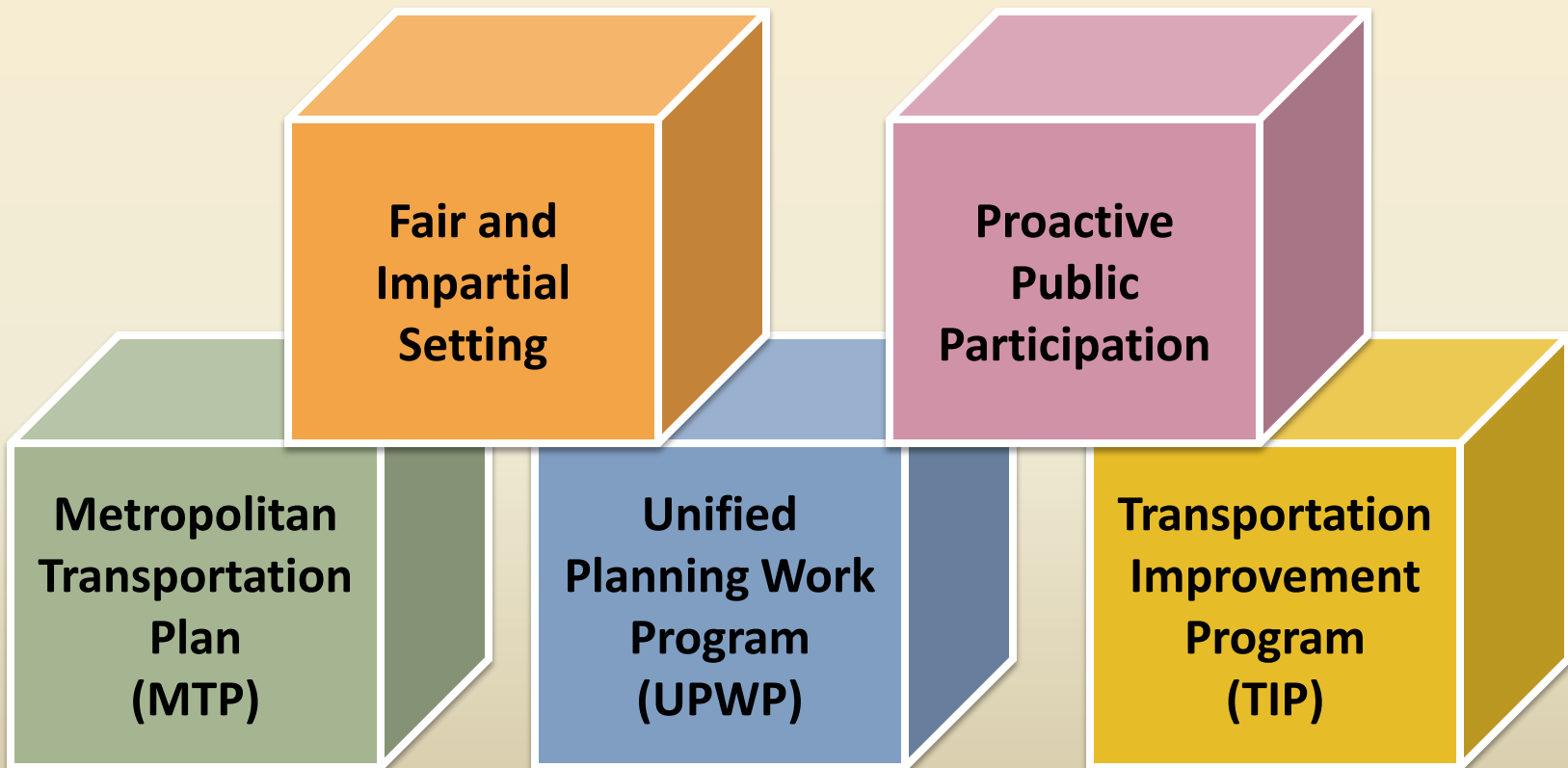


- 9-person Transportation Policy Body.
- Administer Federal Transportation Funds.

# W A M P O

Wichita Area Metropolitan Planning Organization

## 5 Core Responsibilities of a MPO



# W A M P O

Wichita Area Metropolitan Planning Organization

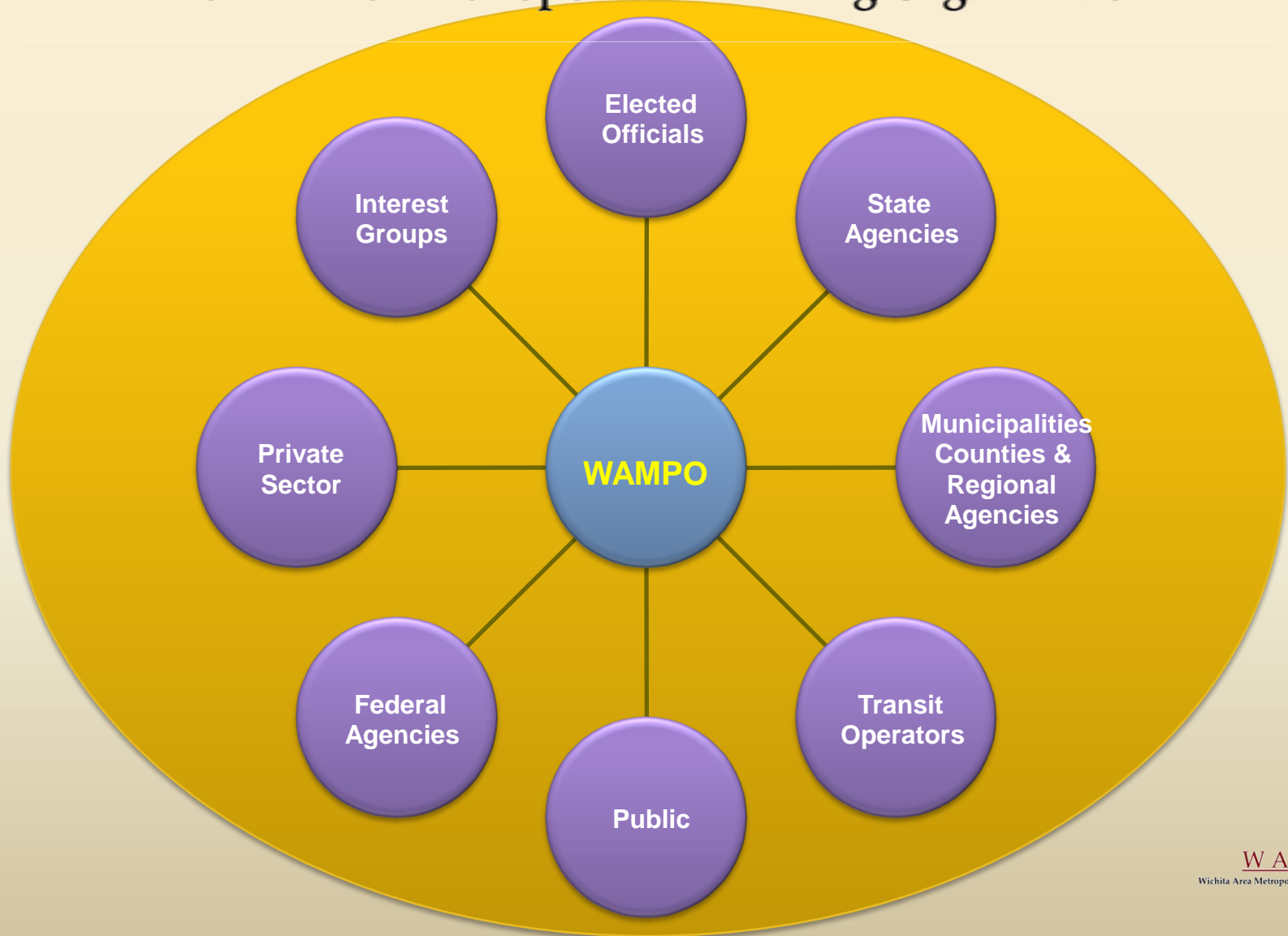
Designated Transportation Management Area (TMA) for the region.

- Congestion Management Process.
- TIP Project Selection Process.
- Regional Intelligent Transportation Systems (ITS) Architecture.
- FHWA/FTA Federal Certification Review.



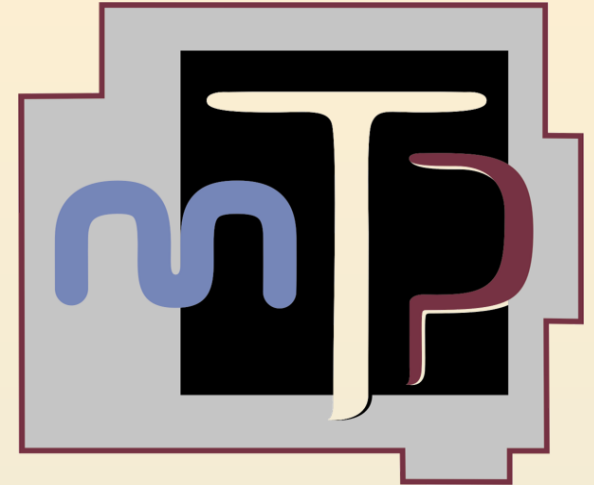
# WAMPO

Wichita Area Metropolitan Planning Organization



# Metropolitan Transportation Plan 2035

- Guiding document for WAMPO
- Time frame of at least 20 years
- Updated every 5 years
- Is Multimodal
  - Streets and Highways
  - Transit
  - Bicycle and Pedestrian
- Fiscally Constrained



# MTP 2035 VISION and GOALS



## MTP 2035 VISION

*The region's multimodal transportation system in 2035 will be safe, efficient, accessible, and affordable.*



**GOAL: SAFE**  
Achieve a transportation system that enhances safety and public welfare.

**GOAL: EFFICIENT**  
Achieve a transportation system that optimizes investments in time, energy, and financial resources.

**GOAL: ACCESSIBLE**  
Achieve optimal intermodal accessibility, mobility, and connectivity throughout the region.

**GOAL: AFFORDABLE**  
Achieve a transportation system that is affordable and equitable for all users.

# MTP 2035 SHORT-TERM OBJECTIVES

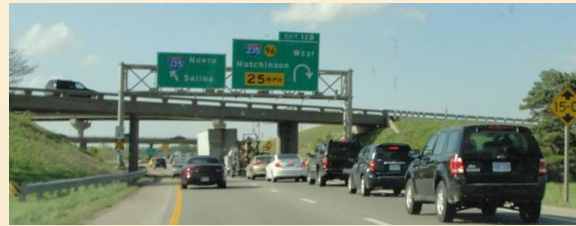


Links to Goals

## O B J E C T I V E S

		Safe	Efficient	Accessible	Affordable
<b>Short-term</b>	<ul style="list-style-type: none"> <li>Select projects that demonstrate the greatest overall improvement of the system.</li> </ul>		⬇	⬇	
	<ul style="list-style-type: none"> <li>Maintain air quality attainment status.</li> </ul>	⬇	⬇		
	<ul style="list-style-type: none"> <li>Increase multimodal options and access.</li> </ul>			⬇	⬇
	<ul style="list-style-type: none"> <li>Decrease the number of transportation related wrecks, injuries, and fatalities.</li> </ul>	⬇			

# MTP 2035 LONG-TERM OBJECTIVES



## OBJECTIVES

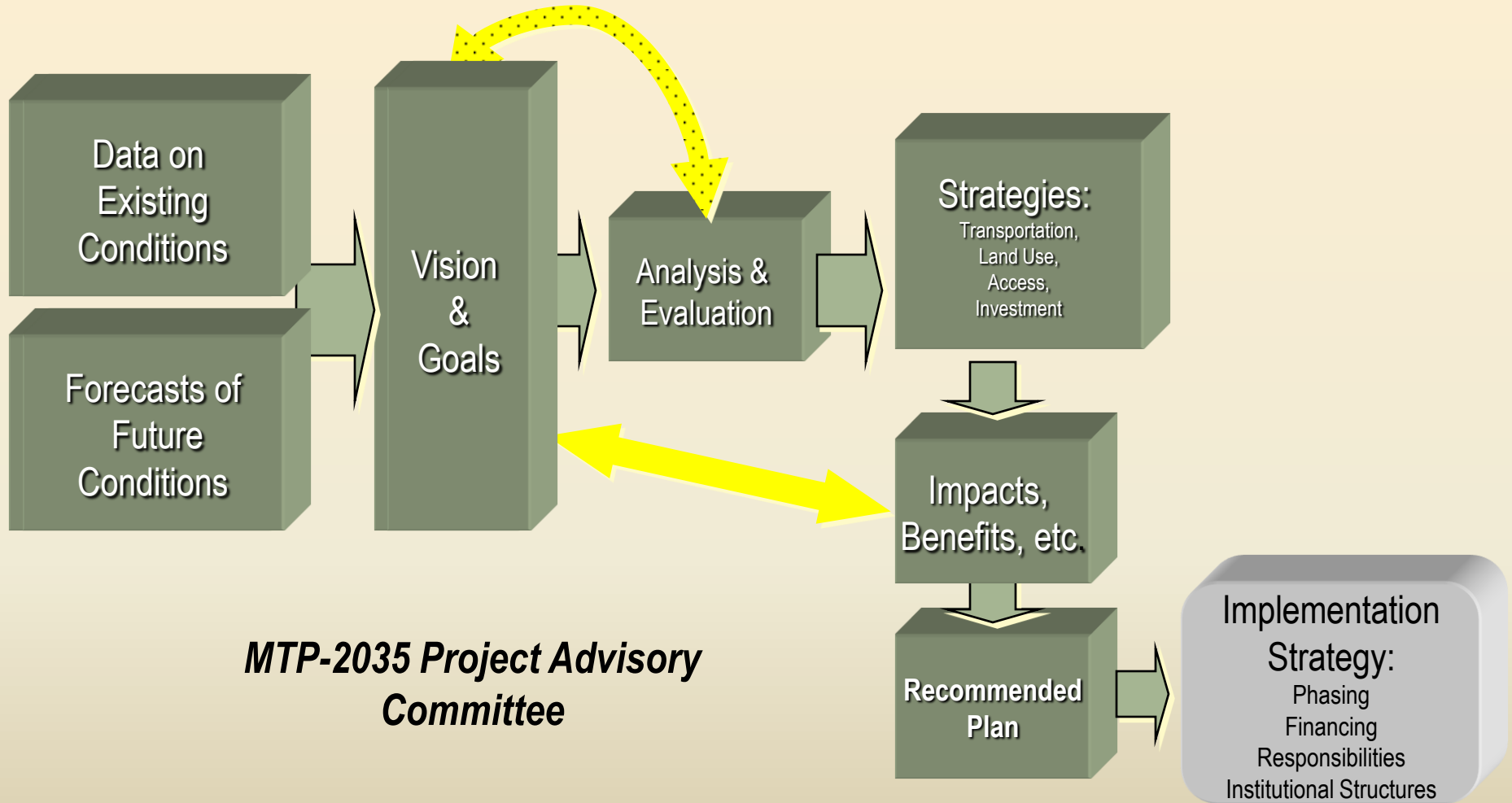
### Links to Goals

### Long-term

- Reduce the amount of time and energy required for the transportation of people and goods.
- Improve volume/capacity ratios and travel times of congested areas identified in the Congestion Management Process (CMP).
- Increase the miles of off-road multi-use paths, on-street bicycle lanes, paved shoulders, and sidewalks.
- Increase the percentage of population that use alternative modes of transportation.
- Increase the affordability of the transportation system for all users, recognizing identified populations in the Environmental Justice Policy.
- Reduce Vehicle Miles Traveled (VMT).
- Make transportation improvements that support economic development.

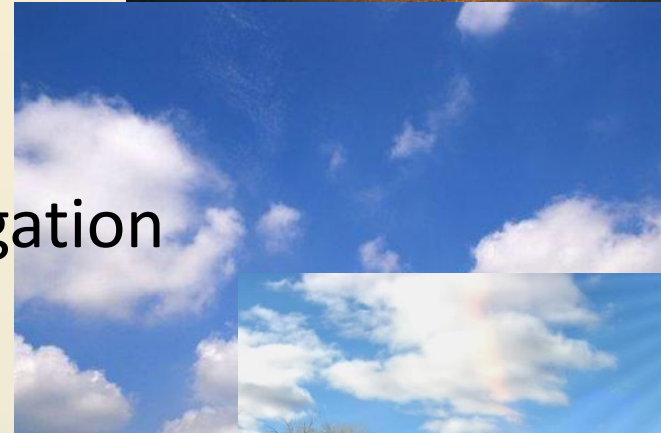
Safe	Efficient	Accessible	Affordable
	⬇		
	⬇	⬇	
⬇	⬇	⬇	⬇
	⬇	⬇	⬇
			⬇
	⬇	⬇	
	⬇		

# MTP 2035 DEVELOPMENT



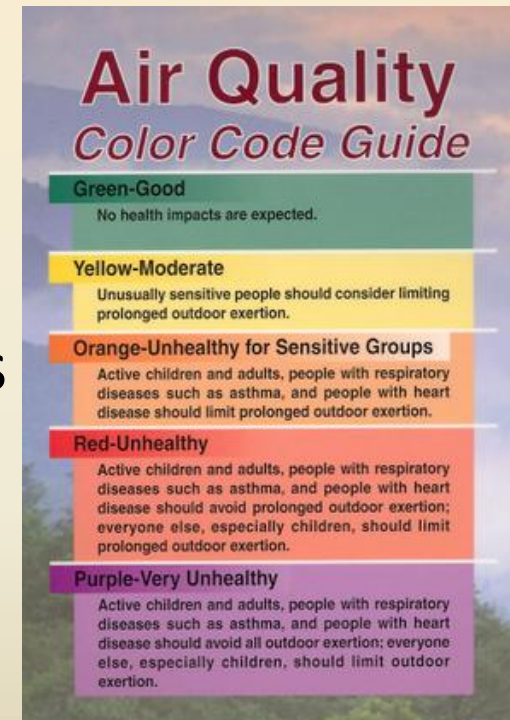
# Currently in Attainment

- MTP 2035 short-term objective is to maintain air quality status.
- Congestion Mitigation Process being updated.
- Administer Approximately \$2.6M/yr in Congestion Mitigation Air Quality (CMAQ) funds.
- Revising TIP Policy for use of CMAQ funds.
- Developing options for air quality involvement.



# If/When Become Non-Attainment

- Mix of transit and highway investments that will keep emissions within allowable emission budget limits.
- All transportation plans, programs and projects must conform w/SIP.
- Transportation plans, TIPs and projects **cannot:**
  - Create new violations of the National Ambient Air Quality Standards (NAAQS)
  - Increase the frequency or severity of existing violations of the standards; or
  - Delay attainment of the standards



# If/When Become Non-Attainment

- Transportation Control Measures become part of SIP. MPO assures they are being implemented.
- Responsible for coordinating transportation and air quality planning.
- All non-federal, Regionally Significant projects included in regional analysis of the MTP and TIP.



Suitability \ Benefit	A	B	C	D
1	High			
2		Medium		
3			Low	

# If/When Become Non-Attainment

- Potential expansion of MPO Metropolitan Planning Area Boundary (MPAB).
- Update the MTP and review it every 4 years.
- CMAQ Fund potentially reduced.
- Other transportation funds used on projects to improve air quality.



# QUESTIONS

# JEOPARDY!

(All responses must be in the form of a question)